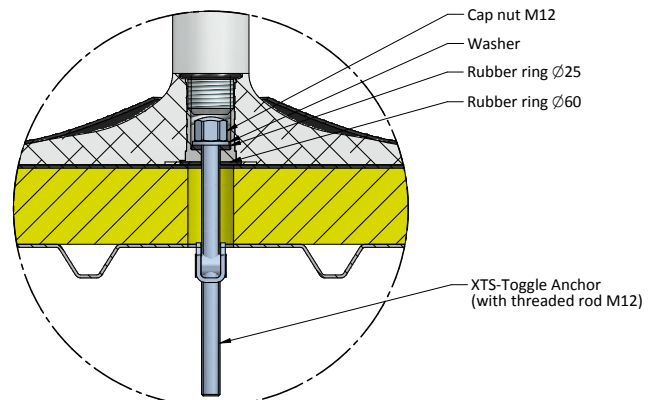
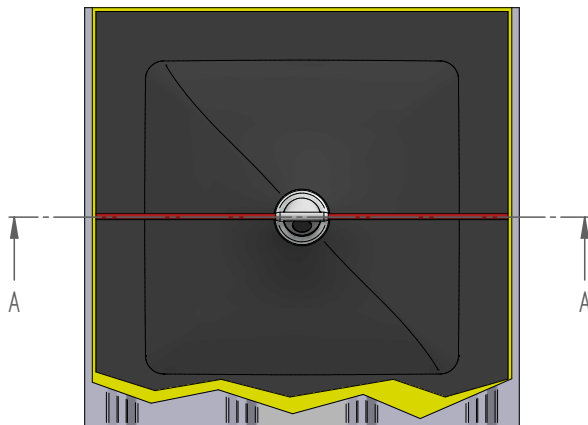


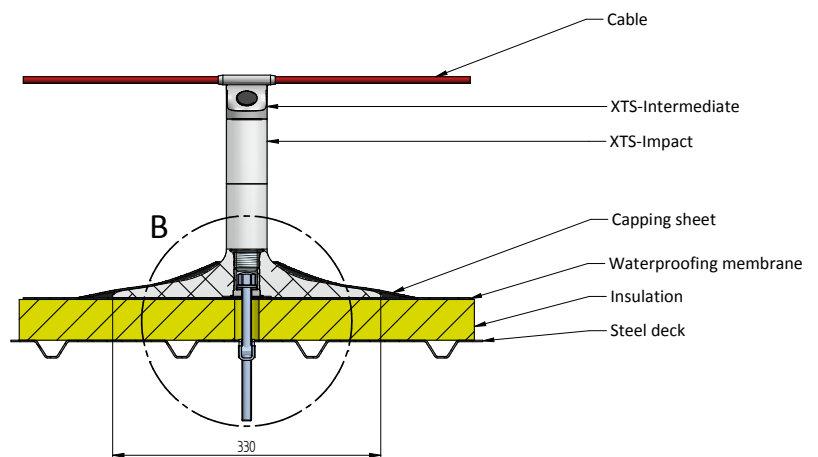
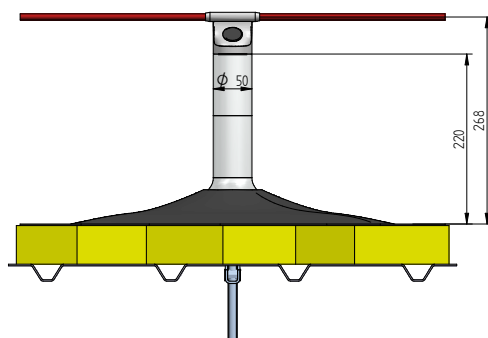


- Suitable for: all types of steel roofs (min. 0,75mm thick)
- By mounting on top of the isolation and roofing, you minimize the damage to the roof
- All XSPlatforms' anchorage points are tested according EN795 class A1 and C

Drawings & impressions



DETAIL B



SECTION A-A

Parts & Materials

11100	XS Bending kit
11110	XS Base plate
11300	XS Toggle anchor
13100	XS Cable

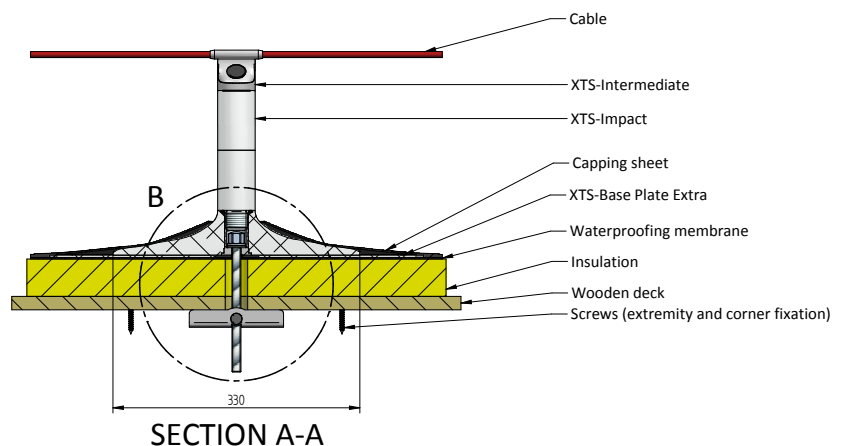
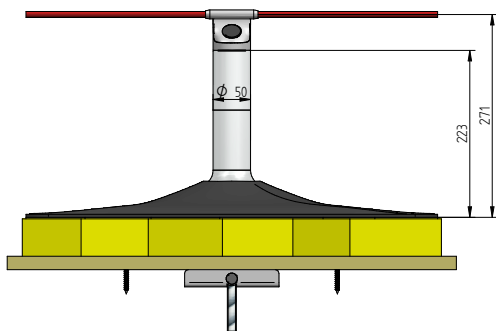
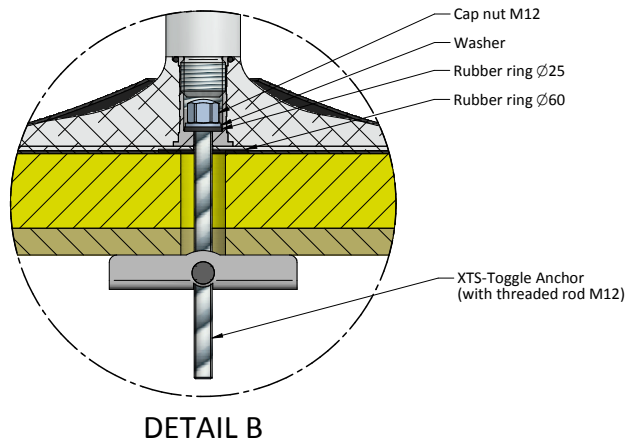
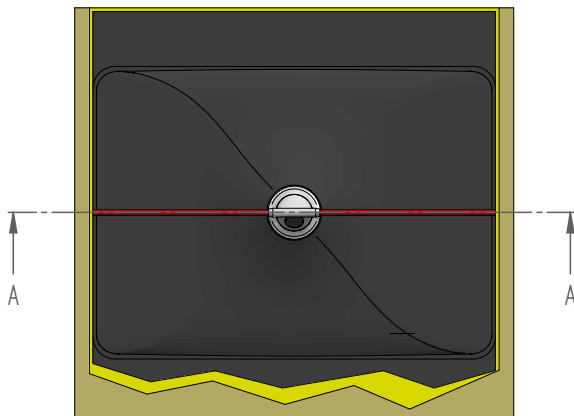
Stainless Steel AISI 304 *	Aluminum
Stainless Steel AISI 304 *	Aluminum
Stainless Steel AISI 304 *	
Stainless Steel AISI 316	

* Parts also available in Stainless Steel AISI 316



- Suitable for: all types of wooden roofs (min. 18 mm ply wood)
- Installment on wooden roofs always requires the use of the XSBase plate extra
- By mounting on top of the isolation and roofing, you minimize the damage to the roof
- All XSPlatforms' anchorage points are tested according EN795 class A1 and C

Drawings & impressions



Parts & Materials

11100	XS Bending kit
11110	XS Base plate
11300	XS Toggle anchor
11700	XS Base plate extra
13100	XS Cable

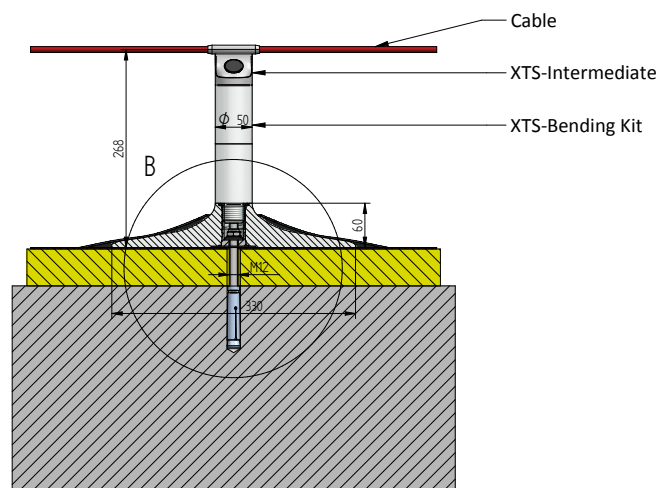
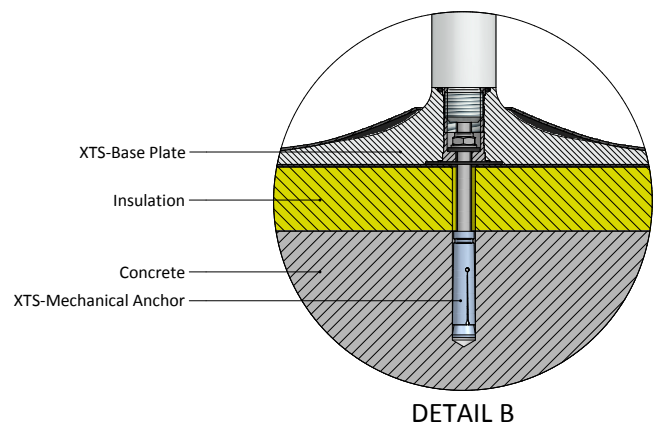
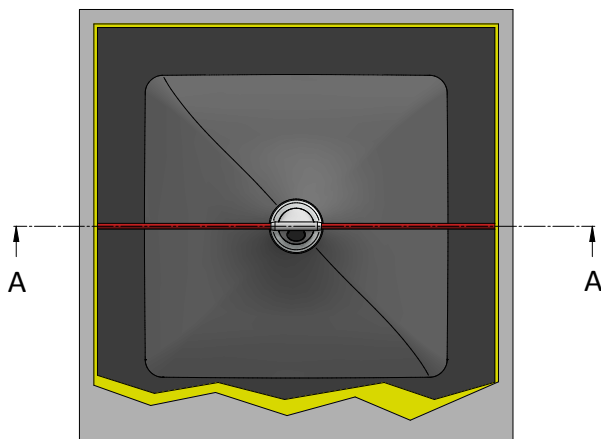
Stainless Steel AISI 304 *	Aluminum
Stainless Steel AISI 304 *	Aluminum
Stainless Steel AISI 304 *	
Aluminum	
Stainless Steel AISI 316	

* Parts also available in Stainless Steel AISI 316



- Suitable for: regular concrete and hollow-core concrete
- By mounting on top of the isolation and roofing, you minimize the damage to the roof
- All XSPlatforms' anchorage points are tested according EN795 class A1 and C

Drawings & impressions



SECTION A-A

Parts & Materials

* Parts also available in Stainless Steel AISI 316

11100	XS Bending kit	Stainless Steel AISI 304 *	Aluminum
11110	XS Base plate	Stainless Steel AISI 304 *	Aluminum
11400	XS Mechanical anchor	Stainless Steel AISI 304 *	Galvanised steel
13100	XS Cable	Stainless Steel AISI 316	