

UNI 8™ OVERHEAD

# MAXIMUM SAFETY WITH MAXIMUM FREEDOM

STRONG • DURABLE • ROBUST



THE ULTIMATE IN FALL PROTECTION

PRODUCT FLYER

# UNI™ 8 OVERHEAD HORIZONTAL LIFELINE

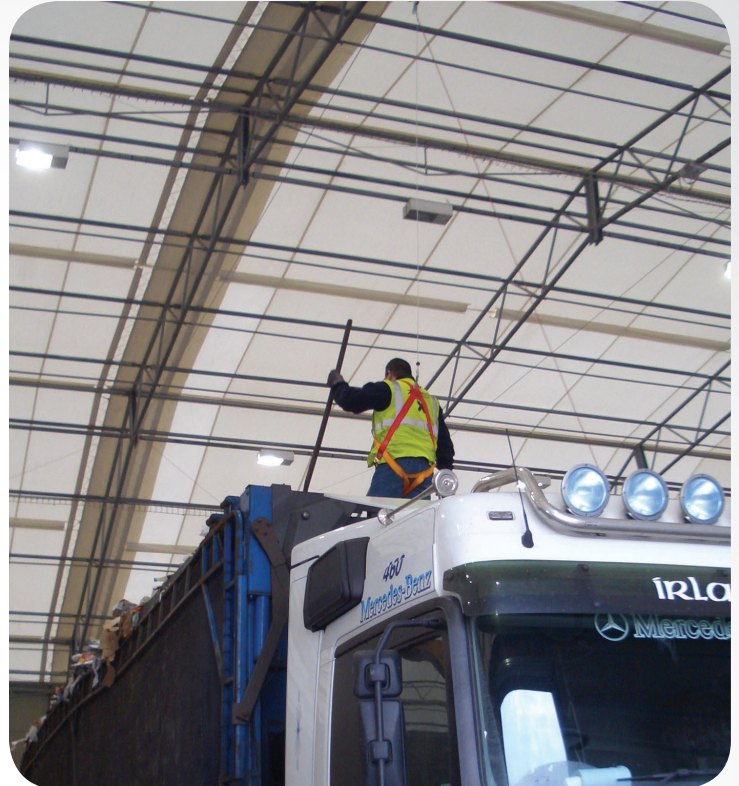
## SINGLE OR MULTI-SPAN SYSTEM

- Free-running attachment carriage ensures complete freedom of travel and movement for the user
- Sealed bearings in the carriage wheels reduce the need for maintenance
- High-tensioned stainless steel cable supports heavy fall arrest devices when required and reduces cable deflections
- In-line energy absorbers reduce load transfer to the structure in the event of a fall
- Strong intermediate cable supports allow the system to span greater distances for long bay work areas and permit free passage of the attachment carriage
- Electropolished components provide long-term corrosion resistance\*
- Supports multiple workers up to 310 lbs. (140 kg)

\*Some aggressive environments can cause corrosion and discoloration of stainless steel

## ALSO AVAILABLE:

- Calculation Software calculates system performance to ensure all system designs meet customer needs and are safe
- Capital Safety can provide design and installation of supporting steel structure



**Tested to EN795 Class C and meets the requirements of AS/NZS 1891.2, is OSHA compliant, ANSI Z359.1 2007**

