

Passive Fall Protection... It's all we do.



A Safety Products Group Company

**The World's Most
Versatile Passive
Guardrail Systems**



SafetyRail 2000

Portable. Non-Penetrating. Easy to install.

No drilling. No holes. No Kidding.



Easy Installation.

No drilling. No tools needed.

Installation is easy, so there's no need to incur the expense of hiring a contractor to install SafetyRail 2000. Two workers can erect over 500 feet of railing in less than two hours without drilling holes into your roof. No other guardrail system can make this claim. Plus, all railings come with simple installation instructions.

500023 EZ Mover

We make it easy for you to protect your employees and contractors.



- ▶ Our four port base allows infinite positioning of the rail sections
- ▶ Positive locking system secures rails to base
- ▶ Complies with OSHA regulations 29 CFR 1910.23 and 1926.502
- ▶ Toe board adapters available
- ▶ No intermediate counter weights required, reducing trip hazards
- ▶ Bases come standard with EPDM pads on bottom
- ▶ Optional EPDM or BUR pads are available
- ▶ Working handles are cast into base for easy lifting and positioning



Bluewater Mfg., Inc. specializes in non-penetrating, passive fall protection products for workplace safety. Our versatile line of guardrail systems fits a variety of applications and meets OSHA guidelines for permanent guardrail without penetrating your roof. That's because no drilling is needed for installation. In addition, it can be used as a portable system to be moved from one area to another; for example, a great feature for water treatment plants. Our optional Rail Transport Cart stores multiple sections of railing and bases and can easily be moved from one location to another.

How does the SafetyRail 2000 System comply with OSHA regulations? It all boils down to physics. When the 108 lb. bases are installed in a run with a 90° return on each end, the combined mass and the geometry of the installation creates a compliant barrier for roof edge protection. Unlike most guardrail systems currently on the market, SafetyRail 2000 only requires a 90° return at the beginning and end of the run, whether it's 5' or 1,000' plus. This unique design allows us to eliminate the cost and danger of potential trip hazards created by intermediate counterweights used in other guardrail systems.



RTC 2000 Cart

Installation in 3 easy steps



IMPORTANT: Our positive locking system allows for quick visual verification that the rails are locked into place. Friction lock systems DO NOT provide this verification.



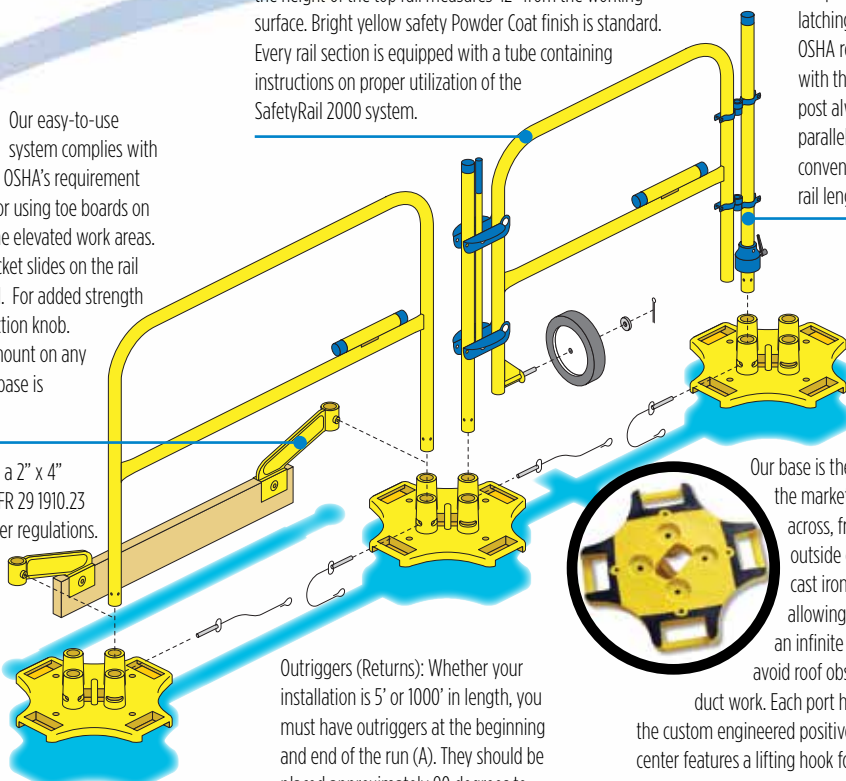
Our easy-to-use system complies with OSHA's requirement for using toe boards on some elevated work areas.

Each bracket slides on the rail and fits easily over a toe board. For added strength it tightens to the rail with a friction knob. Our brackets are designed to mount on any toe board, no matter how the base is positioned.

The minimum toe board size is a 2" x 4" piece of lumber. Check OSHA CFR 29 1910.23 and 1926.502 for these and other regulations.

Each 3', 3-1/2', 4', 5', 7-1/2' and 10' rail sections are constructed of 1-5/8 inch steel tubing. When rails are secured to the base, the height of the top rail measures 42" from the working surface. Bright yellow safety Powder Coat finish is standard. Every rail section is equipped with a tube containing instructions on proper utilization of the SafetyRail 2000 system.

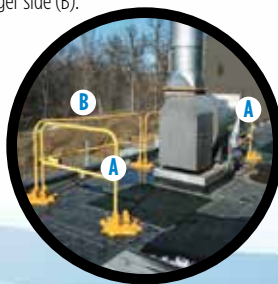
Our gate system features a uniquely strong single-pull, double latching mechanism that meets OSHA regulations. When secured with the locking coupler, the hinge post always holds the hinges parallel to the latch post. Gates are conveniently sized to match the rail lengths.



Outriggers (Returns): Whether your installation is 5' or 1000' in length, you must have outriggers at the beginning and end of the run (A). They should be placed approximately 90 degrees to the danger side (B).

Our base is the most versatile product in the marketplace. It measures 21-1/4" across, from outside of handle to outside of handle. The 108 pound cast iron base has four ports, allowing the rails to be placed in an infinite number of positions to avoid roof obstacles such as drains or duct work. Each port has slots that incorporate the custom engineered positive locking system. The base center features a lifting hook for use with the EZ Mover, as well as handles for easy lifting and positioning. Should you need to permanently mount the base, four holes are available for anchor bolts.

Each base has cast-in reliefs for easy stacking and storage. Each port has a drain hole and **rubber pads come standard** on the underside to protect the roof surface. When placing the base on a slippery or wet surface we recommend using the optional rubber pads for added stability.



One guardrail system. Many uses.

- ▶ Manhole barricade
- ▶ Rail car platforms
- ▶ Ramps
- ▶ Construction sites
- ▶ Dig Sites
- ▶ Mezzanines
- ▶ Assembly and break areas
- ▶ Crowd control
- ▶ Hoist areas
- ▶ And more!

* SafetyRail 2000 has been tested by a licensed engineering firm and was documented to comply with all OSHA regulations pertaining to guardrail (29 CFR 1910.23 and 1926.502). Test results are available upon request.

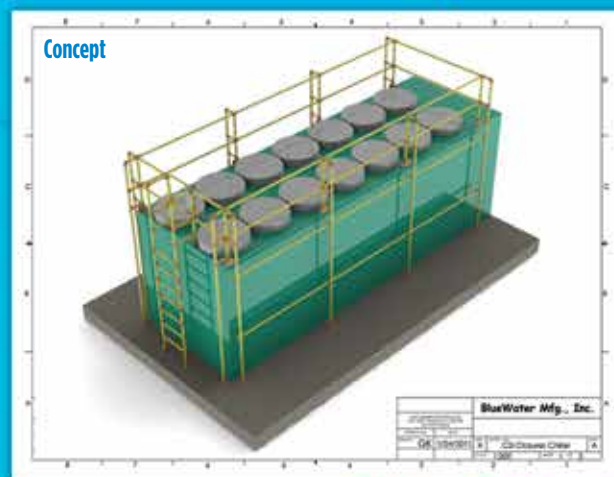
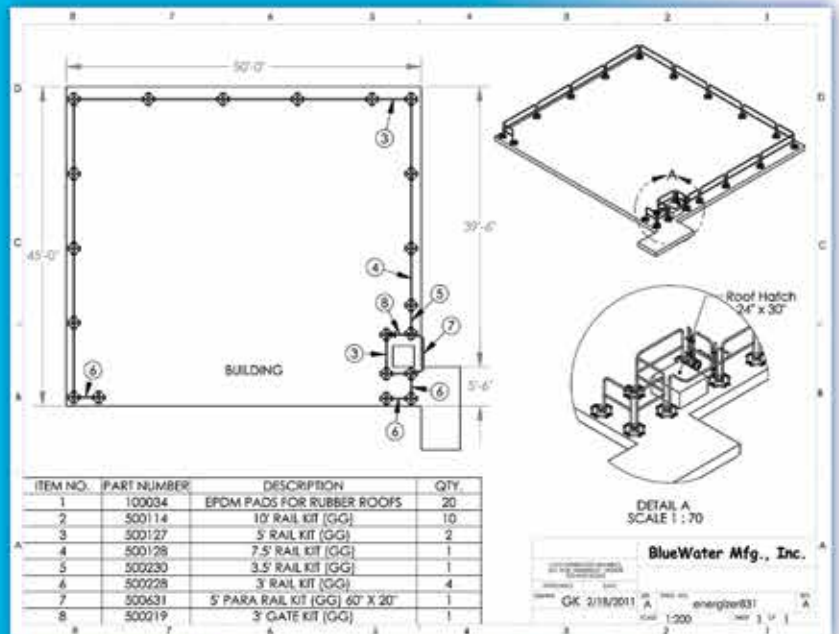
BlueGuardrail system!

CAD Services

Our innovative staff can provide creative solutions to help solve your safety issues..

Complete CAD capabilities

BlueWater Mfg's CAD services range from 2D to 3D modeling. 2D (Plan View) drawings provide documentation for installations as well as ensuring accuracy of the Bill of Materials for your project. In addition, we can provide 3D models to assist you or the end user in visualizing the project. BlueWater Mfg. is committed to making your project as seamless as possible.



ParaRail Guardrail System

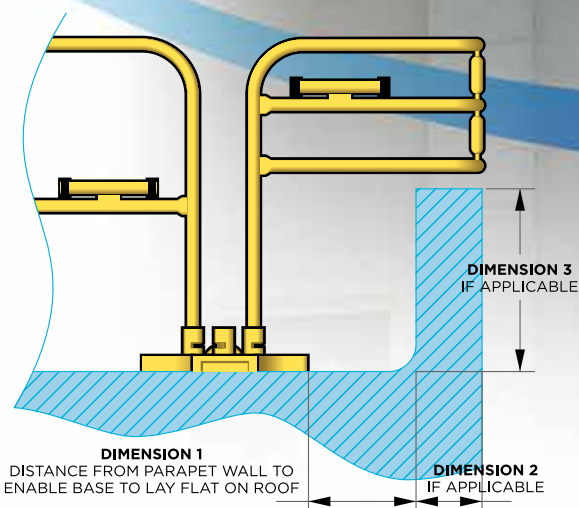
Easy and full access to edges of fall hazards that complies with OSHA regulations.

BlueWater Mfg. invented the ParaRail to allow workers complete access to a leading edge while still being protected by the guardrail. It provides fall protection for a variety of tasks including maintenance for security cameras, antennas, lights, drain cleaning and hoisting of tools and materials. The ParaRail System complies with OSHA regulations for guardrail 29 CFR 1910.23 and 1923.502.

The ParaRail provides the portability and economy of a self-supporting, no drill installation. Just like the SafetyRail 2000, the ParaRail can be erected in minutes. Bases can be easily transported utilizing the EZ Mover and optional EPDM rubber pads and BUR pads are available for added protection of roof surface.

The system can be used as a permanent guardrail or moved to different locations as needed. The ParaRail provides the economies of a fully portable system for commercial, industrial and worksite applications such as office buildings, airports, high-rises, parking decks, raised docks, shopping centers, mezzanines, and bridges.

Each ParaRail is custom manufactured in-house for quick shipment; all we need are the dimensions shown in the diagram to the right. Simply provide these dimensions to us with the desired length and we will manufacture it for you in less than two weeks. Powder Coat and Galvanized finishes are available.



Roof Hatch Floor Door & Skylight Guardrail Systems

Protect your employees, and your investment while complying with OSHA regulations. It's that simple.

OSHA requires guardrail protection on the exposed sides of openings of roofs and floors in most situations. Bluewater Manufacturing's SafetyRail 2000 Guardrail System is designed to meet this safety concern. In fact, our roof Hatch/Skylight Systems exceed OSHA Std. 29 CFR 1910.23. The Roof Hatch/Skylight System is installed in minutes and easily dismantled for roof repair.



Safety and Ease

For roof hatch, skylight, fire vent and floor door protection

- ▶ Non—penetrating
- ▶ Independently tested to comply with OSHA fall protection regulations for guardrails
- ▶ Installs in minutes
- ▶ Easily dismantled for roof repair
- ▶ Designed to erect in numerous configurations (L-shapes, straight runs, and more)
- ▶ 1-5/8" diameter rails come with a quality Powder Coat finish or Hot Dipped Galvanized finish



Skylight System protection



Roof Hatch System shown with Grab Bars

**SafetyRail 2000
Guardrail Systems
require no drilling**

**— keep your roof
warranty intact**

A company of innovation – not imitation.

Hatch Defender

NEW

A non-penetrating safety solution specifically designed for rooftop hatches.



The Hatch Defender's unique compression attachment system sets up in minutes and works without drilling into and compromising the curb of the hatch or your roofing membrane. Units can be easily dismantled for roof deck repair. Made of 1-1/4" sq. tubing and has a hot-dipped galvanized finish. Custom colors are available. The GuardDog Safety Gate comes standard with every kit.



- ▶ Assembles in minutes
- ▶ Grab Bars come standard for easy egress and ingress
- ▶ Both the length and width are adjustable to fit non-standard size hatches

Ladder Defender

NEW

A passive fall safety solution for permanent rooftop access ladders.



The Ladder Defender is an OSHA compliant and cost effective controlled access and passive fall safety solution for permanent rooftop access ladders. Our unique non-penetrating design ensures safe and easy egress/ingress to and from the rooftop. Our proprietary connector brackets attach to three different styles of the ladder frame to ensure that installation is always quick and effective. Custom colors are available to compliment your building's exterior color scheme. The GuardDog Gate is available as an option.

- ▶ Assembles in minutes
- ▶ Adjustable front bar that makes the alignment of the rail to the frame a SNAP
- ▶ Available connector options include: Rail-to-Rail, Rail-to-Flat, Rail-to-Angle
- ▶ Custom colors available
- ▶ Finishing rails are standard

Architectural Series

For applications where appearance is important.



SafetyRail 2000 Architectural Series is perfect for new building construction, adding passive fall protection to an existing building, or as an addition to existing guardrails.



***Pictured with ParaRail.**

Why choose the Architectural Series

- ▶ More pleasing sightlines
- ▶ No drilling necessary to install
- ▶ Complies with OSHA Regulations for fall protection
- ▶ No intermediate counterweights required
- ▶ Custom engineering/manufacturing available for special applications
- ▶ Curved, incline and straight stanchions are also available

When you are looking for a safe, more aesthetically appealing fall protection system, the SafetyRail 2000 Architectural Series is the perfect choice. It combines our non-penetrating guardrail system with architectural appeal for applications where railing appearance is important. The system has a pleasing sightline and can enhance the appearance of a building while maintaining the utmost in fall protection. Like the SafetyRail 2000 System, the Architectural Series requires no penetration to the roof surface when installed and complies with OSHA (Standards — 29 (FR) 1910.23 and 1926.502.



StealthRail Guardrail System

Patent Pending

A collapsible, non-penetrating guardrail system that provides clean sightlines.

**Installation
in 3 easy steps**



The StealthRail Guardrail System provides clean site lines and preserves the architectural integrity of your building, while offering perimeter protection. Each section is collapsible and the one-way pivot assembly allows the rails to fold down after rooftop work has been completed. A detent pin attaches to each pivot assembly, locking the rails in the upright position. Like the SafetyRail 2000 System, the StealthRail requires no penetration to the roof surface when installed and complies with OSHA (Standards – 29 CFR) 1910.23 and 1926.502.

The StealthRail is the ideal solution if you want a complete absence of railing on your rooftop and the ultimate in passive fall protection.

Protect your assets while preserving architectural integrity

- ▶ Reduce costs over an engineered lifetime system
- ▶ Folds out of sight when not in use
- ▶ No drilling required to install
- ▶ Rails can be mounted in infinite positions
- ▶ Use around mechanicals or for perimeter protection



SG Guardrail System

The most versatile guardrail system designed for standing seam roofs



There is no other product on the market like the SG Guardrail System. It features a base plate that “grabs” the seams on your metal roof and complies with OSHA regulations for guardrails. With 3 different styles of stanchions, the galvanized base plate is designed to fit various types of standing roof seams and can be used with our Architectural Series Railings, the SafetyRail 2000, StealthRail and Perma-Line Warning Line Systems.

The SG Guardrail System is ideal for protecting workers at mechanicals, ladder areas and roof hatches, or to create a full perimeter around the rooftop. A CAD layout for simple installation is included with each order.

An innovative solution for standing roof seam roofs

- Complies with OSHA regulations
- Utilizes S-5! Clamps
- Hot-dipped Galvanized finish
- CAD layouts included for simple installation
- Use with Architectural Series Railings, the SafetyRail 2000, StealthRail and Perma-Line Warning Line Systems



Perma-Line

Patent Pending

A cost-effective, permanent visual warning line system for controlled access zones



The Perma-Line can greatly reduce the cost of an entire roof installation by visually protecting the non-serviceable areas of your roof and creating controlled access zones. With this innovative system you will no longer need to make monthly trips to your rooftop to replace worn and torn plastic flagging. Once in place, the Perma-Line remains intact until you want to move it. Best of all, it's a non-penetrating system, preserving the integrity of your roof.

The Perma-Line is not a motion stopping device. It is a highly visible warning barrier that exceeds OSHA regulations for warning line systems.

Safety Rail 2000FG

Fiberglass guardrail system where metal railing can't be used.

The non-penetrating
guardrail system that won't
interfere with RF signals

The SafetyRail 2000FG is constructed out of fiberglass, making it the ideal rooftop passive fall protection system when telecommunication equipment is present and metal guardrails would interfere with RF signals. This RF-transparent guardrail is non-penetrating and can be used as a portable or permanent fall protection system.

Like the SafetyRail 2000, the 2000FG utilizes the four port base, allowing the rails to be placed in an infinite number of positions to avoid roof obstacles such as drains or duct work.

The railings are made from a polyester, fire retardant, UV inhibited and UV coated material. Installation is fast and easy, requiring no tool or drilling.

- ▶ Perfect for applications where metal railings can't be used
- ▶ No drilling necessary to install
- ▶ Meets and exceeds OSHA regulations for fall protection
- ▶ 100% portable
- ▶ Rails can be positioned in infinite positions
- ▶ Each base supports up to four rails
- ▶ Custom engineering and manufacturing for special requirements

Kwik-Rail

The economic modular railing system.



Inquire about our full range of structural pipe fittings.

The Kwik-Rail can be used for a variety of applications including machine guarding, traffic and crowd control, elevated docks or pits, stairway endings, mezzanines and more.

This cost-effective railing creates a tough and durable barrier in minutes with no welding. Assembly is easy. The system can be mounted with standard anchor bolts and the only tool you need is a hex key. The Kwik-Rail comes in kit form and can be utilized with our self-closing GuardDog Safety Gate.

The cross members come standard in 6' lengths, but can be cut to size to fit your specific needs. The railing is 42" tall.

System benefits

- Complies with OSHA and BOCA Standards
- Lower cost per foot
- Tough powder coated pipe in safety yellow
- Easily assembled with a hex key
- Mounts with standard anchor bolts
- 1-1/2" pipe (1.90" OD)

Available options

- Various colors
- Galvanized or aluminum pipe
- 1-1/4" pipe (1.66" OD)

Many applications

- Machine guarding
- Traffic and crowd control
- Elevated docks or pits
- Stairway endings

500136.40 6' Rail Only

500137.40 12' Straight Run

500138.40 6'x6' Corner Section

500139.40 6' Extension

500140.40 6'- 90° Extension (not shown)

Note: For 1-1/4" pipe option, replace the .40 with a .32

Versa-Clamp

The portable fall protection system.

The Versa-Clamp is a portable product that can be set up on parapets and concrete slabs. It can be used from job site to job site, offering passive fall protection that meets OSHA regulations. It's unique compression locking system makes it easy and fast to install. Simply place the clamp over a parapet or on a concrete slab and slide the compression plate against the surface. Turn the compression rod against the plate and you are done! The compression plates are offset so they won't damage copings or flashings on the parapets.

Versa-Clamp Features

- ▶ Versa-Clamp expands from 2" to 17"
- ▶ Compression plates are offset to protect copings and flashings
- ▶ Adjustable guardrail post comply with OSHA guardrail heights from the work surface
- ▶ Install in 8 foot increments
- ▶ Use on parapets or decking applications
- ▶ Toe board brackets available for deck applications
- ▶ Adaptors for rail sections available for deck applications

Gate hoop compression clamp ensures quick set-up and makes adjustments a "snap."



Functions as a slab grabber too.

- ▶ Tough safety yellow powder coat finish is standard
- ▶ Custom manufacturing available to meet your special requirements

Para-Clamp

The portable, cost-effective solution for use on parapets.

The Para-Clamp is a re-engineered Versa-Clamp to be used specifically on parapets to provide fall protection at a reduced cost.

Since it uses the same compression locking mechanism as the Versa-Clamp, the system is easy to install and won't damage copings or flashings.

Para-Clamp can be purchased in two sizes that expand to fit up to either 18" or 24" wide parapets. If you already own a 18" Para-Clamp, we can supply you with a 25" axle bar to accommodate larger parapets.

Para-Clamp Features

- ▶ Easy to use compression locking system won't damage copings or flashings
- ▶ Adjustable guardrail post comply with OSHA regulations
- ▶ Para-Clamp has two size options to accommodate parapets up to 18" or 25" in width
- ▶ Install in 8 foot increments
- ▶ Adaptors available for deck rail sections
- ▶ Tough yellow zinc plating finish is standard
- ▶ Custom manufacturing available to meet your special requirements



Rail Adapter

The GuardDog Self-closing Safety Gate.

**Tough,
durable
and easy
to install.**



Gate Hoop Compression Clamp
ensures quick set-up and makes
adjustments a 'snap.'



Options to suit your situation

- ▶ Gate arm provides maximum opening coverage and the rails are spaced to meet OSHA guardrail regulations
- ▶ Universal Hinge Assembly fits various railing types up to 2" O.D. or flat surface mounting. Adapter kits are available for larger or uniquely shaped railings
- ▶ Each gate is capable of swinging in either direction
- ▶ The self-closing feature employs two stainless steel torsion springs
- ▶ Five nominal sizes are available, and each is adjustable laterally up to 6"

NEW

The GuardDog Safety Gate is designed to match top and mid-rail heights of OSHA compliant guardrails. When the gate is installed with the top rail at OSHA's mandated guardrail height of 42" above the work surface, the bottom rail of the gate is at OSHA's nominal mid-rail height of 21".

The GuardDog can be installed in just 5 minutes. It comes fully assembled and includes securing hardware for pipe/tubing installation. All you will need is a 1/2" wrench.

The gates come in five nominal sizes ranging from 18" to 48". Each gate size can be laterally adjusted up to 6" (-3" to +3") to ensure proper fitting in the opening. Toe board adaptor kits are available for all sizes.

The GuardDog Safety Gate comes in three finishes:

Powder Coat Safety Yellow, Hot-Dip Galvanized or 316 Stainless Steel. Special colors are available upon request. (Minimum paint charges may apply).

Our new Self Stopping GuardDog Safety Gate installs and adjusts easily without the need for a gate stop. This positive stopping mechanism is perfect for mezzanines and other areas which do not have adjoining structure.



**Self stopping
action adjusts in
seconds**



Custom gate for shipyard

Kwik-Stand

A portable visual warning/barrier system.

The portable Kwik-Stand is the industry standard for temporary visual warning line systems and the choice for discriminating roofers looking for a blend of portability, durability and ease of use. This hand-carried warning line system can be used on metal roofs, and gravel or asphalt surfaces. The unique spindle mount system is rigid when in use, and the handles make it easy to hoist and transport. The Kwik-Stand comes standard with a tough powder coat finish.

The Kwik-Stand has holes at each end of the support for use on:

Metal roofs – Insert the optional extender feet to fit between ribs of the roof.

Gravel or asphalt – Use stakes to make the stand more secure.



Shown in use and folded
(ready for transportation).
In powder-coated finish.

Extender feet.

Easy flag tie-off system.

Effective. Portable. Easy to use.

- ▶ Self-contained design with “no lose” lanyard clip pin assembly
- ▶ Complies with OSHA regulations (Std – 29 CFR) 1926.502 (f)
- ▶ Tough powder coat finishes available
- ▶ Each stand weighs 34 lbs
- ▶ Provides a high-visibility warning to reduce accidents using bright yellow OSHA-rated flags
- ▶ Fast to set-up and take down

A myriad of uses

- ▶ Rooftops
- ▶ Construction sites/High-rise construction
- ▶ Manufacturing facilities
- ▶ Maintenance contractors
- ▶ Office buildings
- ▶ Amusement parks
- ▶ Airports
- ▶ Warehouses

Kwik-Kart

Highly maneuverable,
highly mobile.



Quickly secure temporary or unpredicted hazards and protect employees and visitors. With Kwik-Kart, establishing safe distances couldn't be easier. Kwik-Kart's highly maneuverable, highly mobile design enables you to act fast, setting up and securing an area in minutes. Easy to use and affordable. Kwik-Kart's sturdy construction ensures that this is an investment you can use again and again and again.

- ▶ Holds 9 Stanchions (3 Kwik-Stand Kits)
- ▶ Care Free Tires are standard

Swing Alert™

The only Crane Swing Warning System on the market.



Our new Swing Alert system meets OSHA compliance for construction, industry, shipyards, and any other application where cranes are used. All these industries require swing radius protection for all cranes as well as other pieces of equipment that have potential pinch points.

Easy to install. Economical. Effective.

The Swing Alert is lightweight and easily installed by a single person without the use of tools. Plus, it accommodates all types and makes of equipment.



Why not comply when it's so easy?

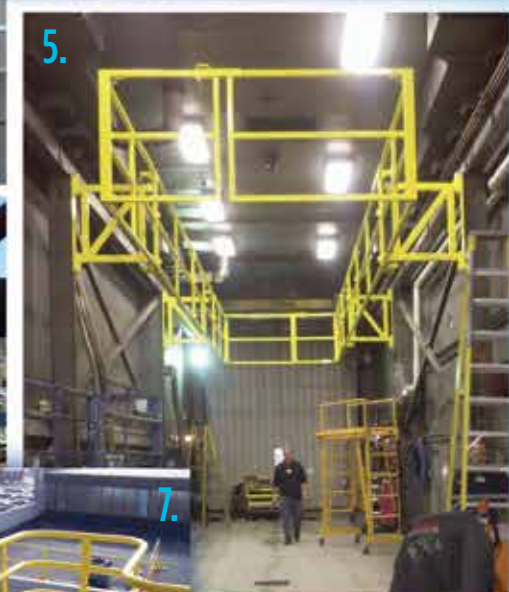
- Complies with OSHA regulations
- Fast and easy to install – no tools needed
- Moves with the equipment
- Effective and economical
- Fits on all types and makes of equipment

Custom and Specialty Applications

Creative Solutions for your Unique Needs



- 1. Tall Rail Section Mounted to Wall
- 2. Chiller Unit Fall Protection
- 3. Stealth Rails with Sliding Gates for Church
- 4. Step Rail
- 5. Elevated/Fixed System for Bus Maintenance
- 6. Adjustable Mid-Rail
- 7. Custom ParaRail for Scupper Drain Cleaning





A Safety Products Group Company

